

- ❑ Specify the time where the video to start playing, e.g., the “In” mark
- ❑ Specify the time where the video to stop playing, e.g., the “Out” mark

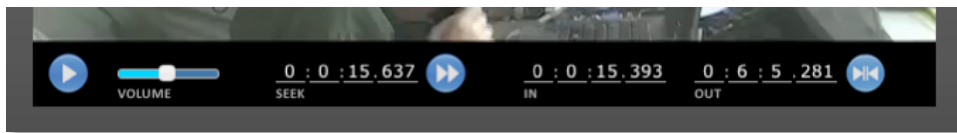


Figure 5-23: Edit Video Player Controls

The “In” and “Out” marks can be set via the player controls; however, they can also be set by clicking the “In” or “Out” buttons available just above the scrubber, see figure 5-24.



Figure 5-24: Edit Video Scrubber Controls

5.3.7 Highlights

The latest feature to be added to PlayOn Manager is the ability to create highlights! Using your uploaded video, this function essentially lets you choose time stamps to specify a special moment, and then sends that information it out to your video portal as if it were a separate event.

Note: The Highlight feature does not create an additional video file. It is just codes the video so that viewers can watch a highlight of your Event online.

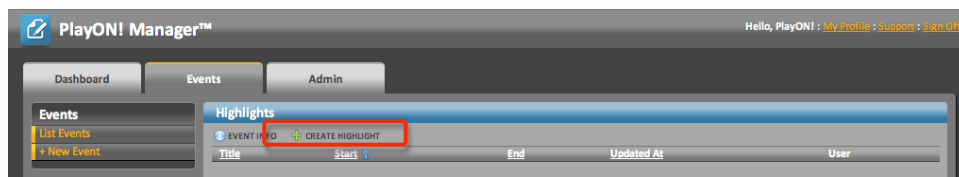


Figure 5-25: Event Productions Page

To create a highlight using PlayOn Manager, follow these simple instructions:

1. Sign on to <http://cms.playonsports.com>
2. Navigate to the Event you wish to make a highlight of
3. Click on the name of the event.
4. A screen named “View Event” will appear
5. Click on the “Highlights” button towards the top of the window
6. Click “+ Create Highlight” (see figure 5-25) “PlayOn Highlight Editor” will appear

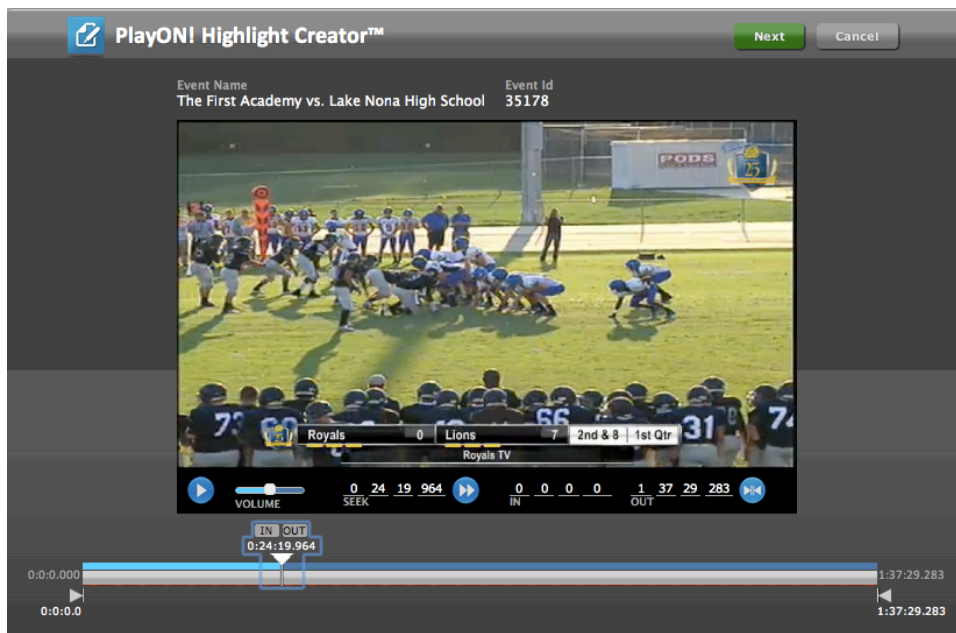


Figure 5-26: Highlight Creator Window

7. Click the blue Play button in the video screen and play the video until your desired start point
8. Then, when you reach your desired start point, pause the video using the blue Pause button in the video screen

When you're actually producing an Event, it's a good idea to write down the time the highlight occurred. For example, "beginning of first quarter," or if you want to be more specific you can check the time stamp under the "System" tab in the PlayOn Producer workspace. See Section 5.5.3.1 for details. This way, when you go to create your highlights, you can easily skim through the video, or even enter in the time in the "SEEK" fields.

9. Click and drag the start time marker, denoted by a gray triangle and line, at the bottom left corner of the window to the point where the video is paused, and click the "In" button
10. To set the end time of your video, move the end time marker in the bottom right corner of the window to the desired end point, and click the "Out" button
11. Check to make sure that the start and end times that you set are correct by watching portions of the video
12. Click the green "Next" button in the top right corner of the window to save the times that you set
13. An additional window will pop up where you can insert information about your highlight
 - a. In the "Title" field, you will want to type in a descriptive name for your highlight. This should include the name of the athlete that was involved in the highlight, that athlete's position, or maybe grade, or number, and your school/the athlete's school. This makes the highlight easy to search for, entice viewers to watch, and give enough information for it to stand out amongst the other highlights.
 - b. Some good examples are:
 - i. Lincoln High School sets a new State record for the girls 4x400 meter relay
 - ii. Lakeview's Doug Bright knocks down a 3-pointer on the baseline to end the 1st half

Like in a professional broadcast, keep your highlights short – around 30 seconds. This will keep people excited about the content and more apt to share it.

- iii. Matt Murphy of Littleton with a massive homerun at the 2012 CHSAA 5A Baseball Final

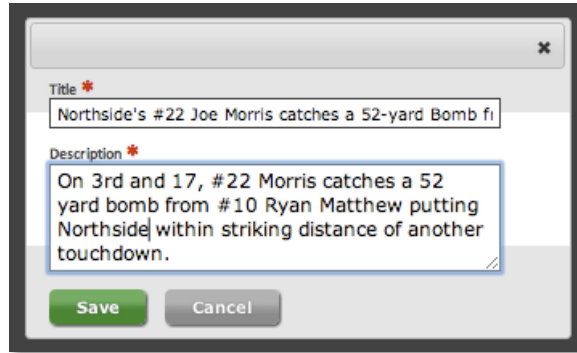


Figure 5-27: Event Productions Page

- 14. In the "Description" field is for sharing a little more information about the highlights. Think of it as something an announcer would say during the action.
- 15. Click the green "Save" button.

You can create as many highlights as you'd like for an Event. Promote and share them with your friends on your favorite Social Media outlet.

Note: All highlights are played on a YouTube video player, and will appear on your video portal as well as on the PlayOn YouTube Channel (www.youtube.com/playonnetwork).

5.3.7.1 Highlight Creator Controls

The player controls provide you the ability to:

- Play and pause playback
- Adjust volume, preset to 50%
- Seek to a specific time in the video
- Specify the time where the video to start playing, e.g., the "In" mark
- Specify the time where the video to stop playing, e.g., the "Out" mark

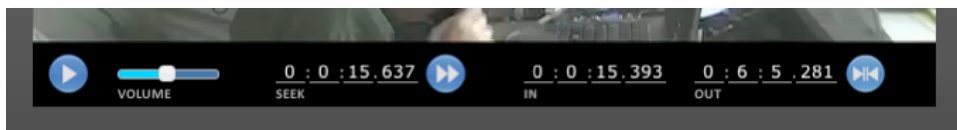


Figure 5-28: Edit Video Player Controls

The "In" and "Out" marks can be set via the player controls; however, they can also be set by clicking the "In" or "Out" buttons available just above the scrubber, see figure 5-29.



Figure 5-29: Edit Video Scrubber Controls